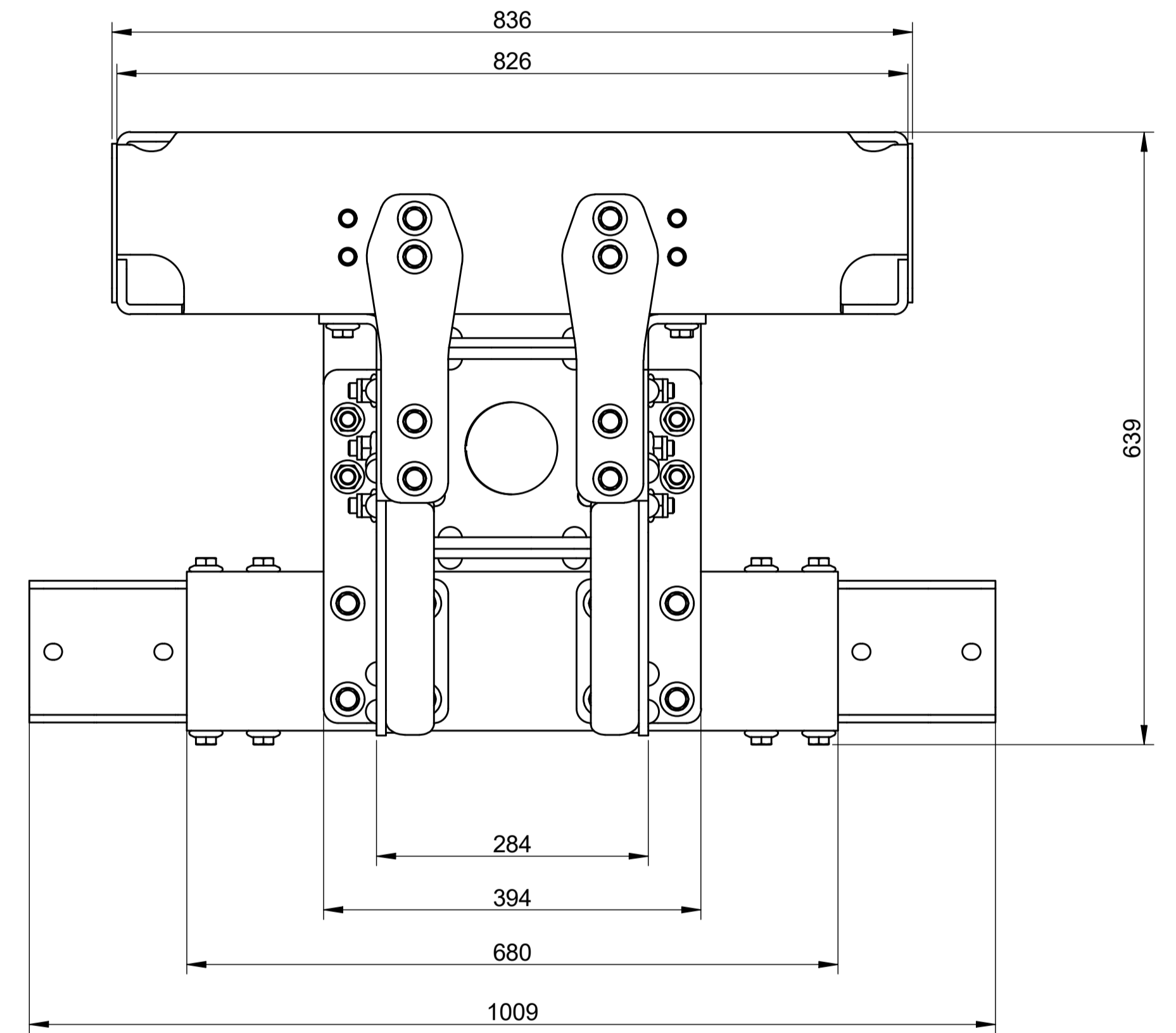
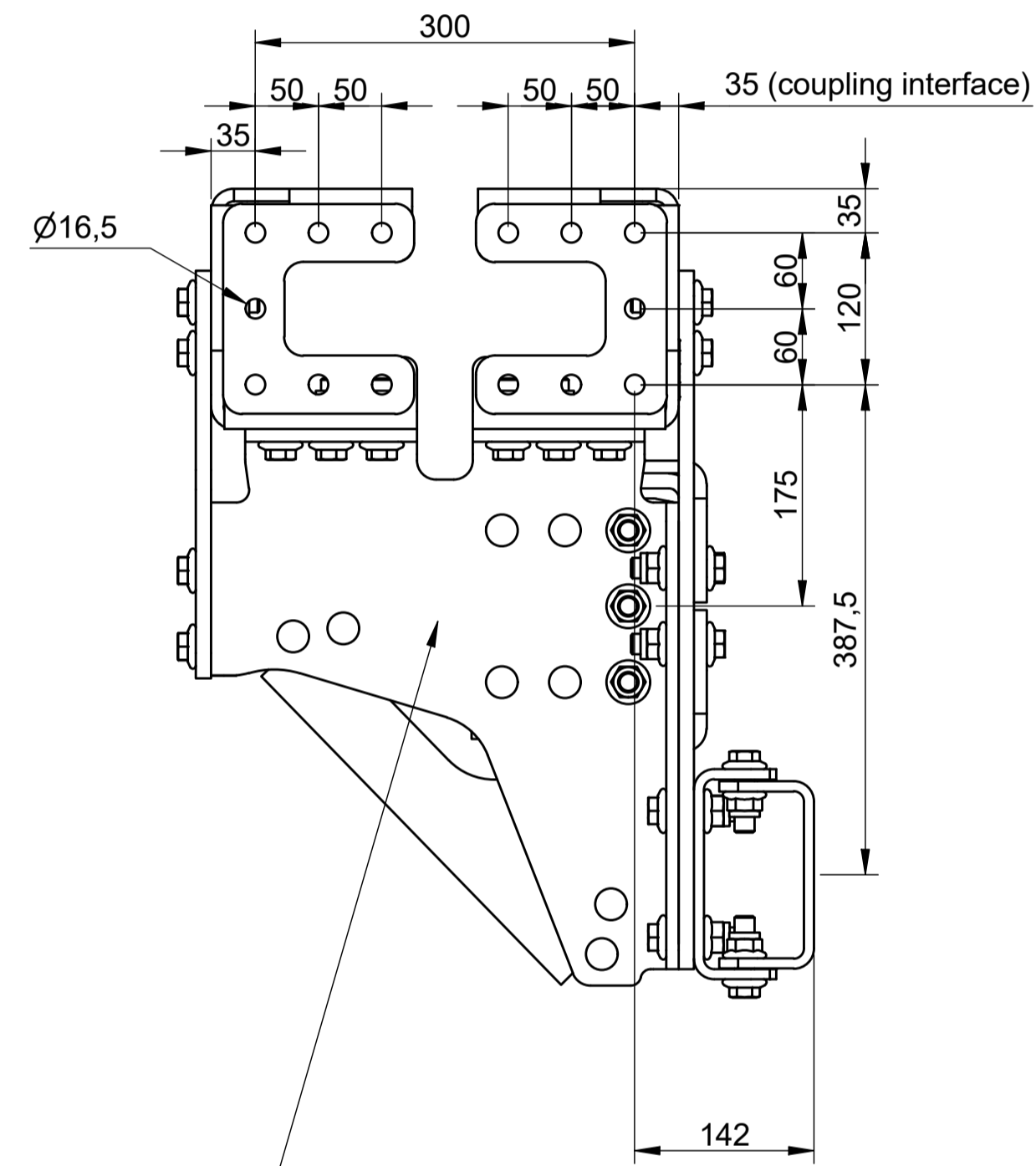
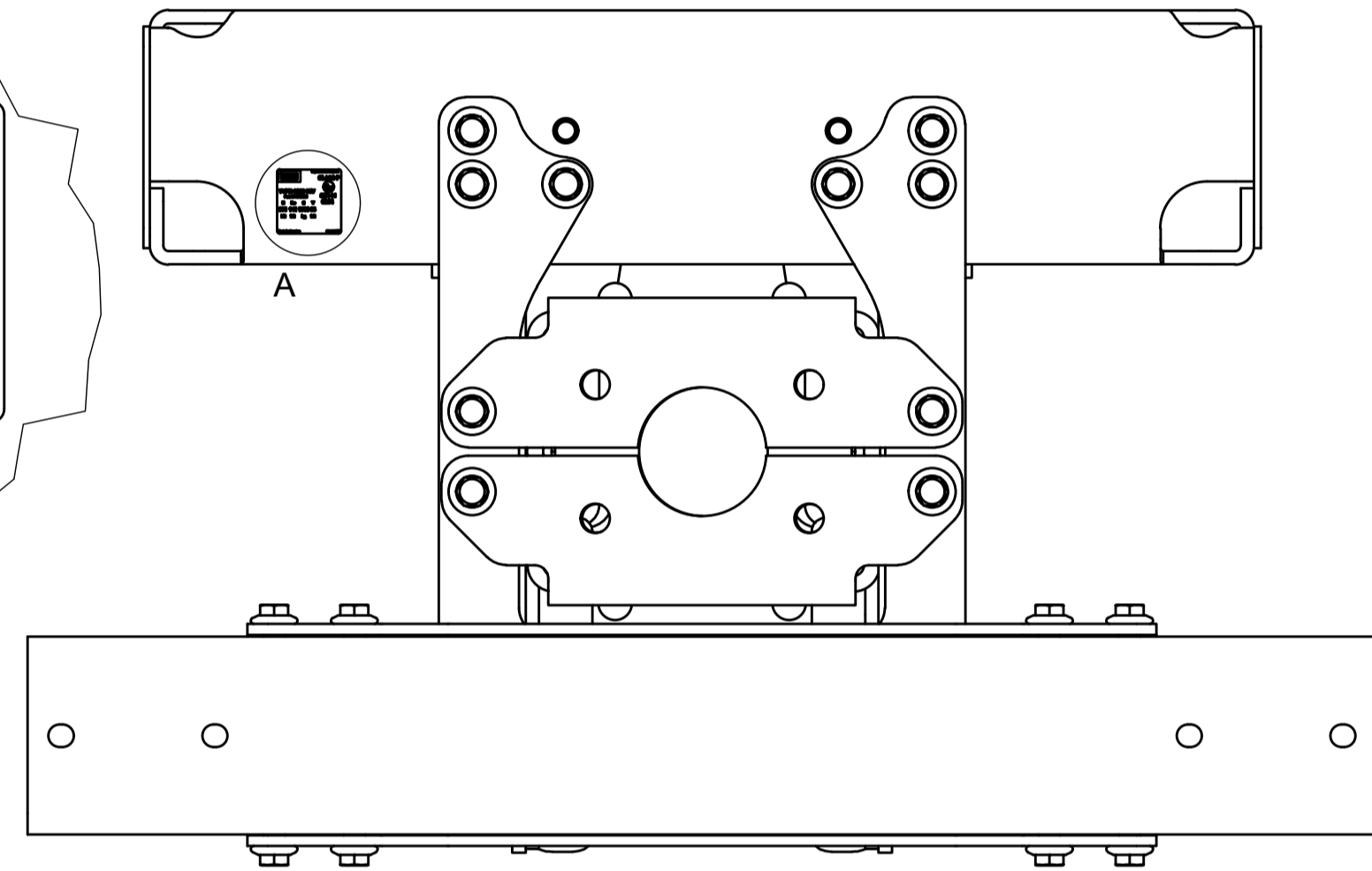
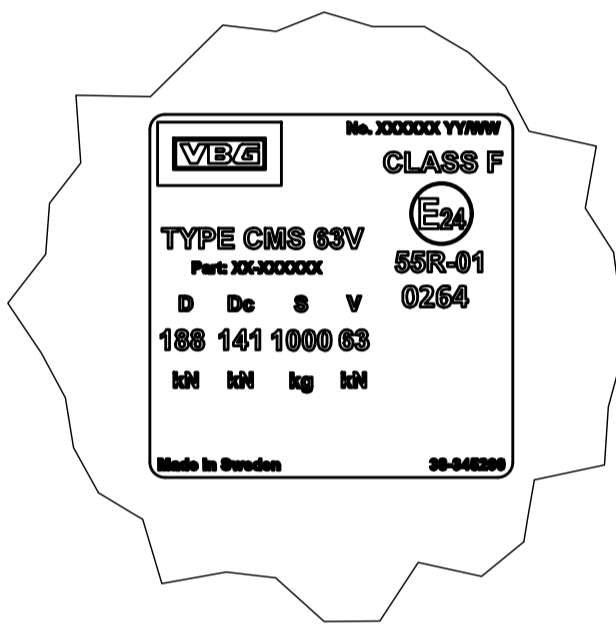
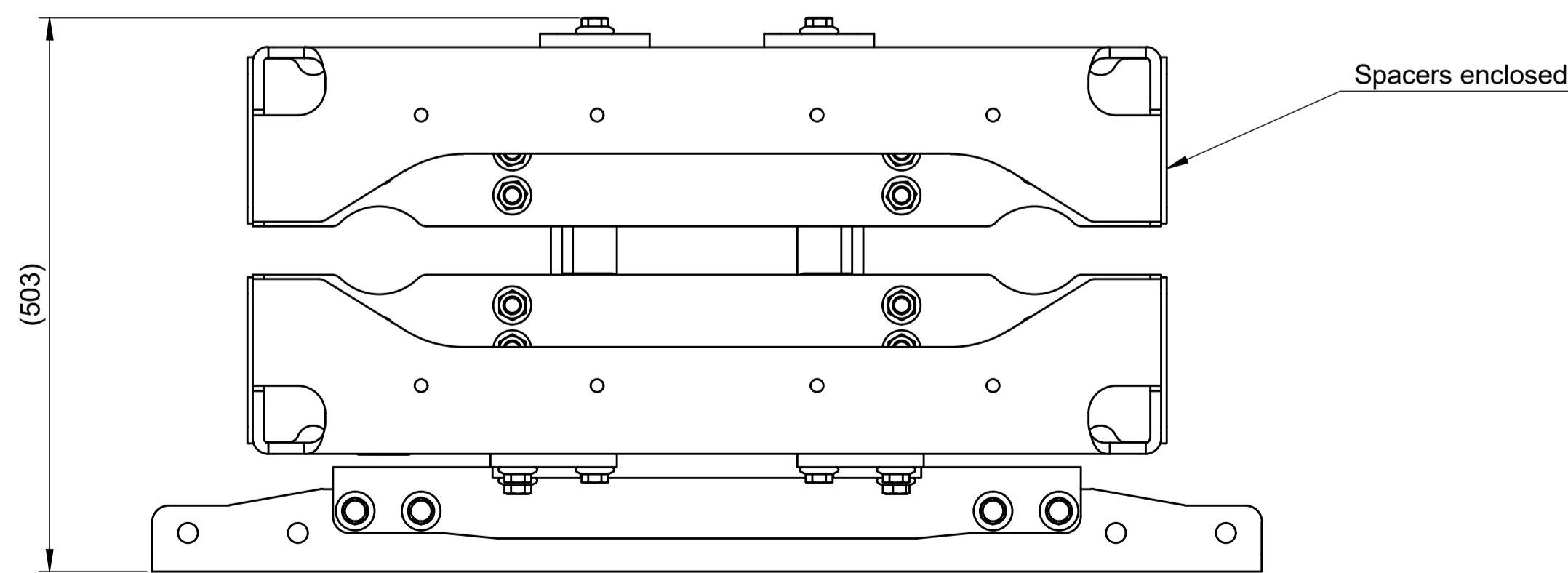


A (1:1)



R58 Certification ID: VFDU-C ("C" = Class C)



- 6 Total weight: 159,16 kg
- 5 All products, product specifications & data are subject to change without notice.
- 4 Required frame stiffness for valid R58-03 certificate min 5700 cm⁴.
- 3 Dimensions for information only.
- 2 For Underrun Protection type approval information, see protective beam.
- 1 VBG Installation Report 38-321500

VBG GROUP		Modified Date	Modified by	Modification No.	Issue
Description		2021-03-11	RJ	13387	a
CMS 63V EU180 Volvo cH=175		3D Model No.	21-722800	Engineer	Checked by
		Sheet type	Front	RJ	RJ
		Scale	1:5	Drawing Date	Drawing by
		Stage	P	2021-03-11	RJ
		Drawing No.	P 21-722800(F) INFO		
<small>This drawing is the property of VBG Group AB and is protected in accordance with prevailing law. Changes must be made in CAD program; this concerns both 2D & 3D.</small>					